

# HEALTH EQUITY AT THE GEORGIA HEALTH POLICY CENTER

"Health equity is achieved when every person has the opportunity to attain his or her full health potential and not one is disadvantaged from achieving it because of race, income, or other socially determined circumstances." — Centers for Disease Control and Prevention<sup>1</sup>

At the Georgia Health Policy Center (GHPC), our dedicated staff are committed to a more equitable and healthier future, particularly for society's most vulnerable populations.

## HOW DO WE DO THIS?

The Georgia Health Policy Center has a reputation as the go-to health policy research center for state and federal agencies and policymakers because we provide objective, credible, and timely health policy guidance and research.

We continually strengthen these partnerships based on the principles of trust, value, and support:

- Trust — We work collaboratively as a reliable partner.
- Value — We deliver excellence by providing timely research capacity, data-driven information, and responsive counsel for the benefit of our partners and community members.
- Support — We facilitate important, strategic conversations to support effective policy development and decision-making.



## HEALTH AND OPPORTUNITY FOR ALL

GHPC's work has been built on improving access to health care, identifying the root causes of disparities, and addressing health from a systemic perspective.

Our mission is to integrate research, policy, and program development to advance health and well-being. We recognize that advancing health cannot happen in isolation and that it requires tackling entrenched, systemic barriers, including poverty, housing, and lack of educational and economic opportunity. We take a broad view of health, examining all systems, policies, and upstream factors influencing well-being, and looking for inclusive, cross-sector, and transformative solutions to achieve health equity.



## HOW WILL THE EVENTS OF 2020 SHAPE GHPC'S WORK?

For 25 years GHPC has remained a relevant and trusted partner. In the face of triple crises — the COVID-19 pandemic, resulting economic struggles, and heightened awareness of systemic inequities — GHPC remains steadfast in its approach to its work. We will continue to:

- Advocate for an approach to problems, rather than specific solutions
- Build and value relationships
- Create the right environment for important conversations
- Provide objective, relevant information
- Think systemically about tough problems



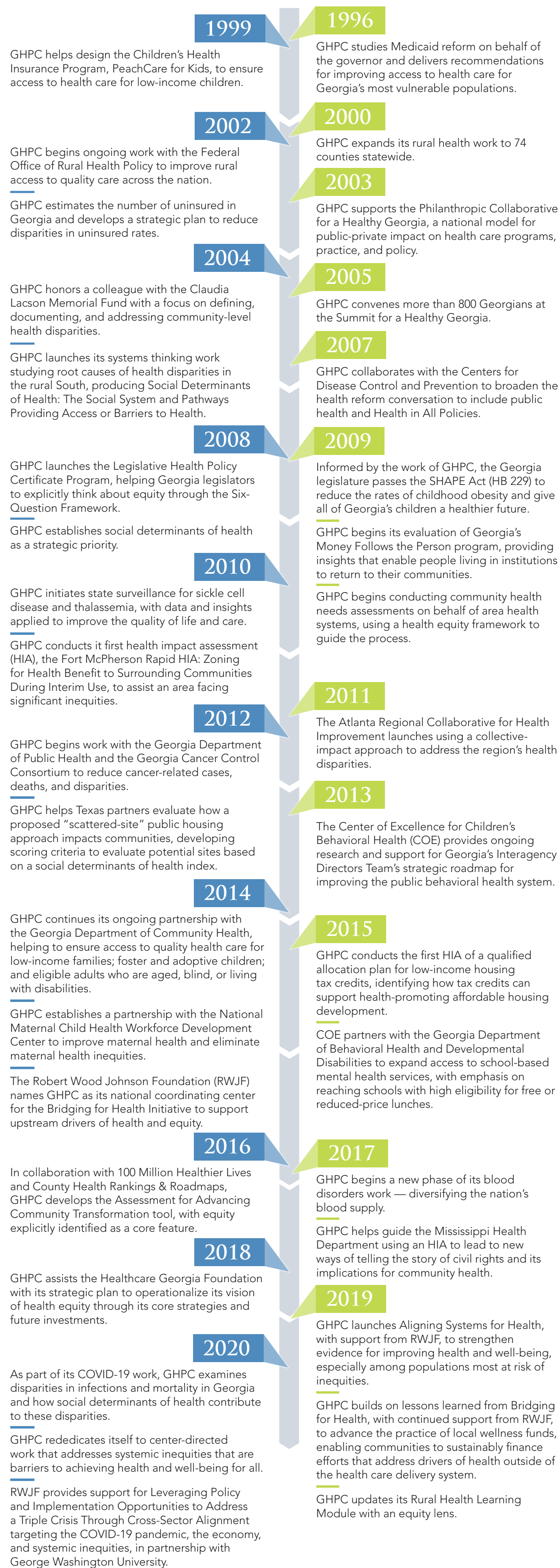
## MOVING FORWARD

Meaningful work toward achieving health equity requires a commitment to innovation. In June 2020, Ambassador Andrew Young charged staff at GHPC with thinking about what success looks like and working to achieve that desired vision.

GHPC's staff is committed to meeting this challenge. GHPC is examining the social, systemic, and structural challenges preventing individuals and communities from achieving their best health and supporting conversations. There is ongoing research and evaluation of policy and programs to address systemic inequities and the resulting disparities in health outcomes. This research, translation, and facilitation supports real-time understanding of the root causes of inequities and enables consensus building around sustainable, systemic solutions.



## A TIMELINE OF GHPC'S EQUITY WORK



<sup>1</sup> National Center for Chronic Disease Prevention and Health Promotion. (2020). Health Equity. Centers for Disease Control and Prevention. Retrieved from <https://www.cdc.gov/chronicdisease/healthequity/index.htm>